

POSITROL WORKHOLDING



Swing Clamp Chucks

Higher Productivity with Positrol's Swing Clamp Chuck

Higher Quality Parts

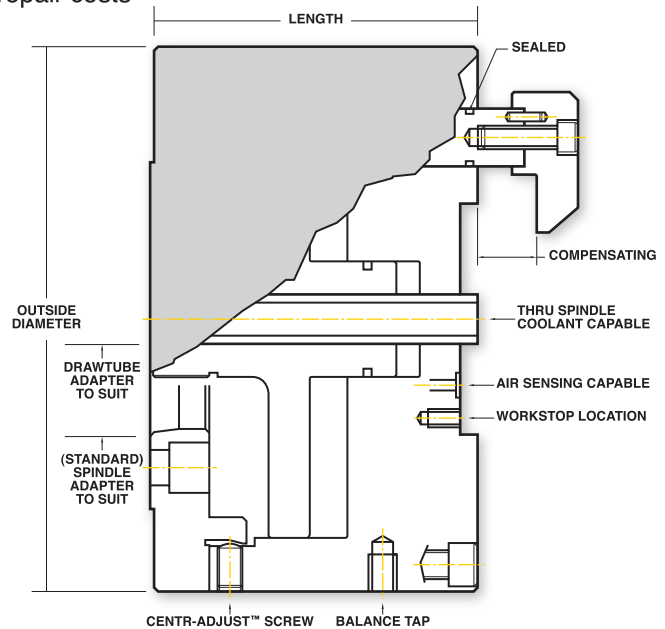
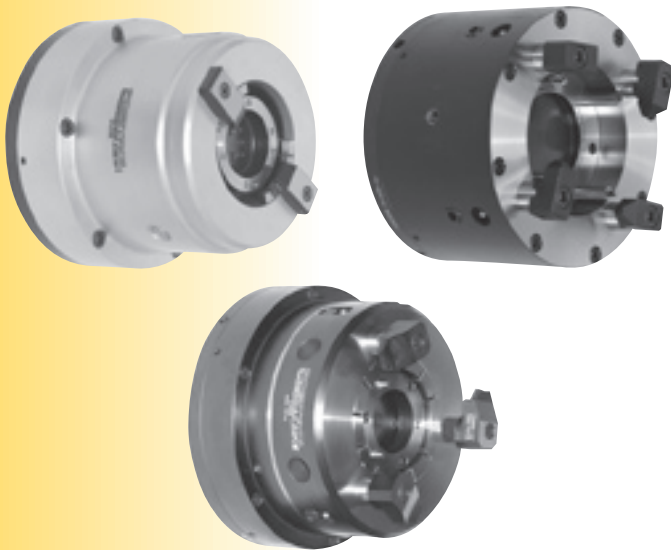
- Thin walled, irregular, or out-of-round parts can be clamped for turning, milling and grinding without distortion
- Out-of-flat parts can be clamped evenly on all points which will eliminate deformation
- Parts can be centralized by collets to positively secure the part or by straight/tapered pins
- Jaw quantity and position are designed to clamp the part in the optimum locations
- Air sensing capable to ensure that the part is located against the workstop to maintain parallelism

More Throughput

- Better quality parts decreases scrap rate
- Workstops are designed to suit multiple parts to eliminate changeover
- Thru spindle coolant capability prevents chip build up for nonstop production

Increase Uptime and Decrease Cost

- Drawbar/Drawtube actuated by machine cylinder
- Sealed against contamination for continuous use
- All components are hardened and ground for long life to decrease repair costs
- Available in three standard sizes. Specials are offered



STANDARD SWING CLAMP CHUCK DATA

MODEL NUMBER	NUMBER OF JAWS	MAX CAPACITY (DIA)	OUTSIDE DIAMETER	LENGTH	CHUCK WEIGHT	MAX DRAWBAR FORCE	MAX RPM	JAW STROKE
7500-008	2	4.25"/108 mm	8.25" 210 mm	7.10" 180 mm	75 LBS 34 Kg	4000 LBF/17.8 kN 6000 LBF/26.7 kN 6000 LBF/26.7 kN	3000	.85" 21 mm
	3	4.25"/108 mm						
	4	4.25"/108 mm						
7500-010	2	5.50"/140 mm	10.00" 254 mm	7.85" 200 mm	120 LBS 54 Kg	6000 LBF/26.7 kN 9000 LBF/40.0 kN 9000 LBF/40.0 kN	2400	.85" 21 mm
	3	5.50"/140 mm						
	4	5.50"/140 mm						
7500-012	2	6.75"/171 mm	12.00" 305 mm	8.31" 211 mm	180 LBS 82 Kg	9000 LBF/40.0 kN 12000 LBF/53.4 kN 9000 LBF/40.0 kN	2000	.83" 21 mm
	3	6.75"/171 mm						
	4	7.00"/178 mm						

*ALL DIMENSIONS & SPECIFICATIONS ARE SUBJECT TO CHANGE

CALL FOR APPLICATION ASSISTANCE AT +1.513.272.0500

POSITROL, INC. • 3890 VIRGINIA AVE. • CINCINNATI, OHIO USA
PHONE: +1.513.272.0500 • FAX: +1.513.272.0503 • email: sales@positrol.com

www.positrol.com

BETTER WORKHOLDING
BETTER PARTS
POSITROL
+1.513.272.0500